

# Available for Lease

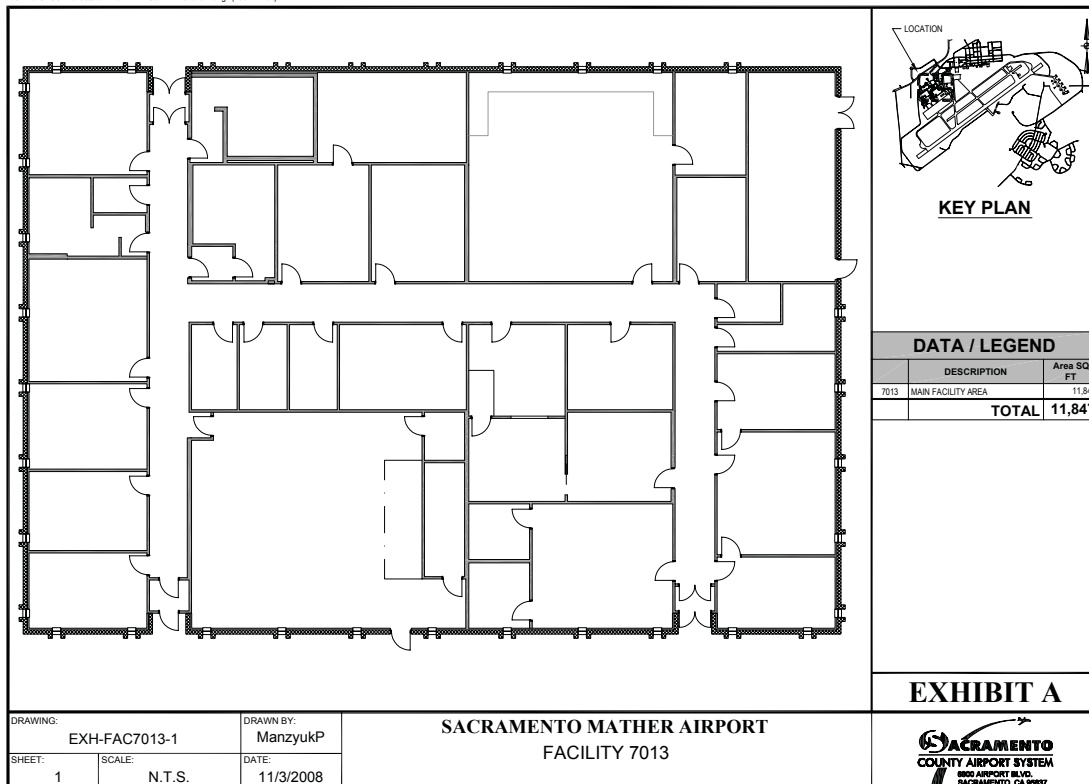
## Building 7013 - 3735 Neely Way

### 11,900 sq. ft. Office Space



- Campus-like setting; double-glass main entry doors
- Large classroom with separate entry
- Built in 1979; Tilt-up construction
- Single story with painted sheetrock demising walls
- Carpeted floors

Updated: 11/3/08 - Printed: 11/3/08 2:58pm By: ManzykAP  
 File: W:\AUTOCAD\master\MHREXHIBITS\EXH-FAC7013-1.dwg (Tab: Exhibit)



DRAWING: EXH-FAC7013-1  
 SHEET: 1 SCALE: N.T.S.  
 DRAWN BY: ManzykP  
 DATE: 11/3/2008

SACRAMENTO MATHER AIRPORT  
 FACILITY 7013

EXHIBIT A



Includes frontage landscape and paved auto parking.

# Sacramento Mather Airport



Various buildings are for lease, including:

- 31,217 sq. feet of office space
- 26,600 sq. ft of hangar, shop and office space
- 17,600 sq. ft. ramp side air cargo sort facility

Mather Airport is conveniently located 12 miles east of downtown Sacramento, near Rancho Cordova, along the Highway 50 corridor with access to public transportation. The airport occupies approximately 2,875 acres and is surrounded by a mix of residential, commercial, industrial, and open land uses. The office park offers a secure campus-style setting for corporate, governmental or light-manufacturing tenants.

For more information please contact Michael Musca at (916) 874-0918 or [muscam@saccounty.net](mailto:muscam@saccounty.net)



MATHER AIRPORT

